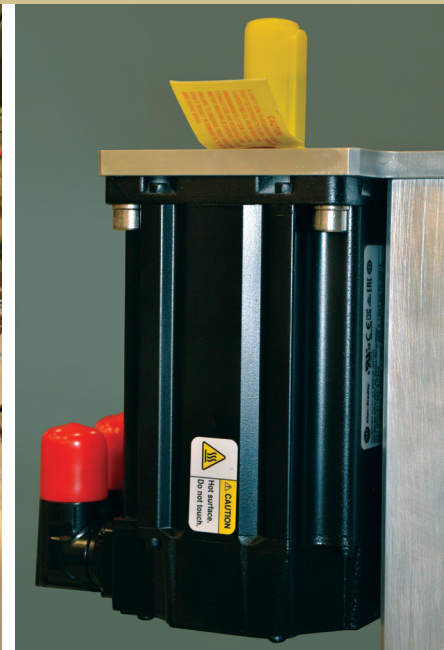
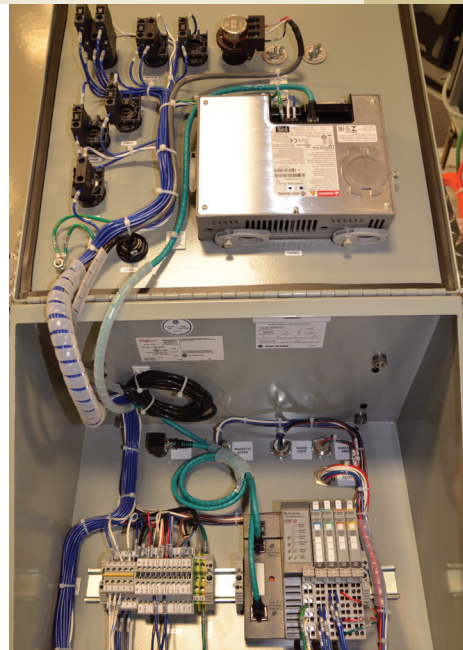
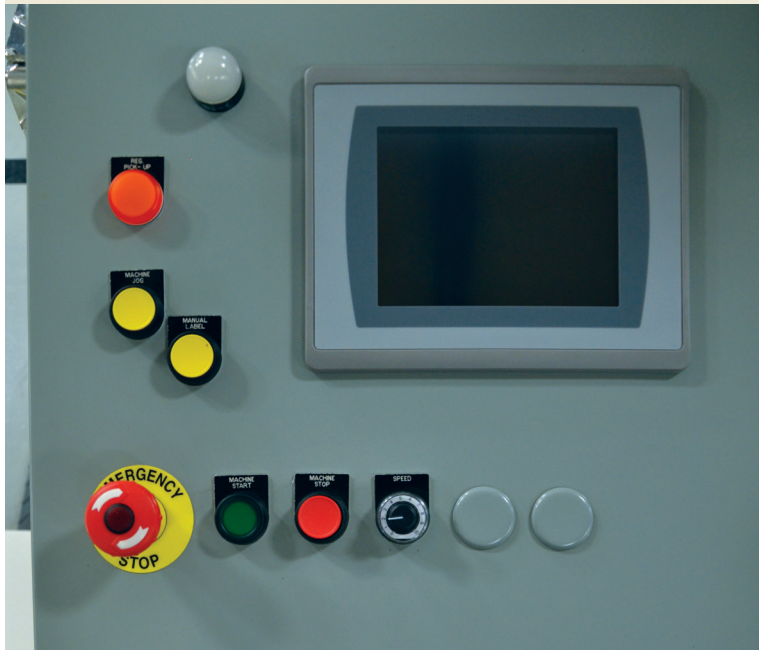


## Complete Controls Upgrade (CCU) Kit



The B & H Complete Controls Upgrade (CCU) is an aftermarket offering from B & H designed to extend the useful life of any BH8000, BH1600 or BH2000 labeler. The CCU is based on the latest PLC, Servo and VFD controls and hardware made by Allen-Bradley. The upgrade package has been designed, configured and programmed to reduce the operating costs and improve the performance of any BH8000, BH1600 or BH2000 labeler.

### COMPLETE CONTROLS UPGRADE FOR BH1600, BH2000, BH8000 SERIES LABELERS

#### BH1600, BH2000, BH8000 SERIES LABELERS COMPLETE CONTROLS UPGRADE OPTIONS AND HIGHLIGHTS

##### OPTIONS

- Warner Tension System replacement
- Guard Door Safety Switch Replacement (when guards are present)
- Virtual Private Network (VPN) connectivity for remote diagnostics

##### HIGHLIGHTS

- For BH8000, BH1600, BH2000 series labelers
- Faster, higher precision, and more robust all-digital components versus Ormec GEN III/Orión systems and EMP
- Replaces the entire electrical controls system with modern equipment
- Twelve month warranty
- Twelve-hour Installation
- HMI touchscreen offers expanded troubleshooting capabilities
- Fewer component failures
- Lower maintenance costs
- More uptime and higher productivity
- Fast payback, particularly versus older Gen III and EMP System

##### CONTACT US

parts@bhlabeling.com  
+1.209.556.6160

##### B & H LABELING SYSTEMS

3461 Roeding Road  
Ceres, CA 95307  
USA

www.bhlabeling.com



INNOVATION FOR THE LONG RUN®

##### CCU DESCRIPTION

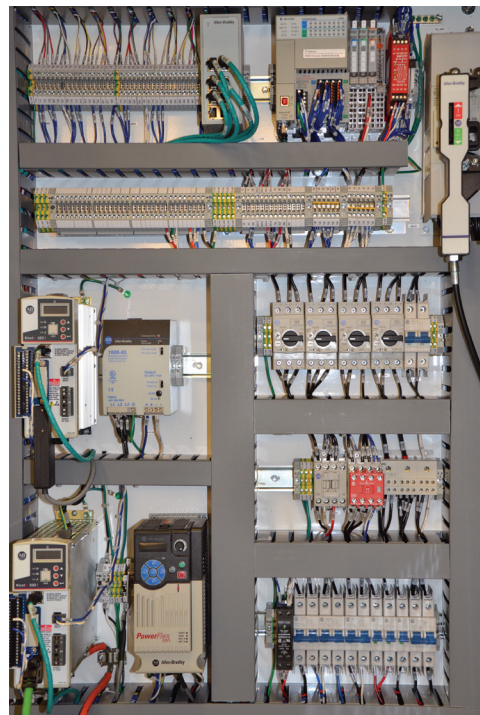
The kit consists of a Main Electrical Cabinet, Operators Console, Servo Motor and plug-in electrical cabling for the major components of the labeler. Communication between devices is over Ethernet TCP/IP. Operation of the machine and display of machine status is through a 7" Allen-Bradley Panelview 7 display mounted in the Operator Console. The upgrade is the latest technology ensuring availability of replacement parts for many years to come.

##### DURABLE AND DEPENDABLE

B & H takes great pride in the durability of our labelers. Installing the Complete Controls Upgrade Kit is an easy way to extend the useful life and increase the operating efficiency of your B & H labeler. The kit replaces an entire range of now obsolete or very difficult to obtain and maintain components. It brings an old machine up to a new, standardized control system making service and maintenance of the controls easier and less expensive. Bottom line, the Complete Controls Upgrade is one of the best investments you can make for your BH8000, BH1600 or BH2000 labeler.

##### FAST INSTALLATION

The CCU has been designed to enable fast conversions. From demolition of the old controls and electrical to installation and power-up of the new system will take two B & H Field Service Engineers 12 hours to complete. Once the new CCU components are in place, our Field Service Engineers will test and demonstrate the system and train your personnel to use it.



Actual main control cabinet of complete controls upgrade.

##### CONTACT US

For more information or to order your new CCU kit, contact your dedicated B & H parts coordinator at 209-556-6160 or by e-mail at parts@bhlabeling.com.