



**THE BH700**, when paired with any BH or Marathon roll-fed labeler, creates a durable and dependable roll-on shrink-on labeling system. Based on the industry standard B & H Endura® Process, the BH700 provides high-impact shrink labeling at a lower cost versus shrink sleeve labeling.

#### ENDURA FOR ENHANCED SHELF APPEAL

In B & H's patented Endura process, shrinkable roll-fed labels are applied to containers using a roll-fed labeler. Containers are then conveyed through the BH700 shrink system, where temperature-controlled hot air guns gently warm the label area. The label shrinks and perfectly conforms to the contour of the container. The result is a unique, eye-catching package with enhanced shelf appeal.

#### A RANGE OF APPLICATIONS

With a wide array of available shrinkable label materials, the BH700 is able to support labeling of a wide variety of shaped containers, from innovative contour profiles to necked-in aerosol cans. The system handles metal, glass, plastic and fiberboard containers ranging in size from 2 to 3.5 inches (50.8 to 88.9 mm) in diameter. Operating at up to 500 containers per minute, the BH700 shrink system can interface with any roll-fed labeler.

#### COST-EFFECTIVE DECORATION

Labels applied with roll-fed shrink technology are less expensive than shrink sleeves. Initial capital equipment investment is lower, and change parts and label costs are less. Line speeds are typically faster than shrink sleeve labelers and overall machine productivity is higher due to reduced scrap rates and lower machine maintenance.

For aerosol manufacturers using necked-in cans, the Endura process provides many advantages over pre-printed litho-decorated cans: just-in-time manufacturing flexibility, reduced warehouse space and inventory carrying costs, shorter production runs; and faster new product introductions.



#### ENDURA®

The Endura process is the industry standard for cost effective, high-impact roll-on shrink-on labeling.

#### BH700 HIGHLIGHTS

- Steady-state production speeds up to 500 containers per minute (cpm)
- Compatible with a wide range of film labels, including polypropylene (PP), polystyrene (PS), polyvinylchloride (PVC), polyethylene (PE) and polyolefin (PO) blends
- Handles contoured glass, metal, plastic and fiberboard containers; excellent for labeling "necked-in" aerosol cans
- Rugged construction with stainless-steel main frame guarding and conveyor chain
- Six directional heat guns, adjustable by temperature and position, deliver quality results for a wide range of products
- Container rotation system features variable, user-selectable speed for consistent shrink
- Additional heat guns can be added for applications requiring higher shrink percentages
- Centralized operator station simplifies setup and control
- Compatible with any roll-fed labeler

#### CONTACT US

sales@bhlabeling.com  
+1.209.556.6160

#### B & H LABELING SYSTEMS

3461 Roeding Road  
Ceres, CA 95307  
USA  
sales@bhlabeling.com



INNOVATION FOR THE LONG RUN®

# BH700

## BH700 SPECIFICATIONS<sup>+</sup>

### Application Speed Range\*:

70 - 500 containers per minute (CPM)

### Container Size Range:

Minimum diameter: 2 in (50.8 mm)

Maximum diameter: 3.5 in (88.9 mm)

### Container Materials:

Plastic, glass, metal, fiberboard

### Label Materials:

Shrinkable PP, PS, PE, PVC, and PO blends

### Electrical:

Main voltage:

Standard: 380 - 480 VAC, 3 phase,

50 - 60 hz, 20 kWh

### Conveyor:

Left hand feed

Left or right side transfer from customer conveyor;

Stainless steel table top chain; 4.5 in

(114 mm) wide

### Conveyor Height:

Adjustable 36.5 in to 39.0 in (927 mm - 991 mm)

<sup>+</sup> Specifications subject to change without notice.

\* Production speed is dictated by labeler speed, container type, container shape, label characteristics and line conditions.

## B & H LABELING SYSTEMS

3461 Roeding Road

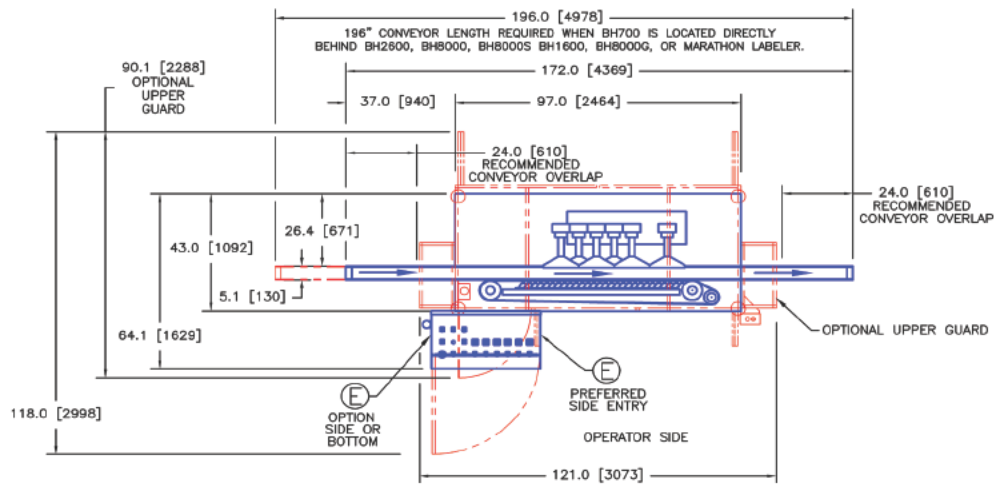
Ceres, CA 95307

Tel: +1.209.556.6160

Fax: +1.209.537.6854

www.bhlabeling.com

sales@bhlabeling.com



### GENERAL FEATURES

**HOT AIR GUNS:** 6 directional units with individual temperature controls; fully adjustable position

**TURBINE AIR BLOWER:** air supply for hot air

**AIR REGULATOR:** controls air supply for hot air guns

**CONVEYOR:** straight through configuration with left hand feed and stainless steel table top chain

**CONVEYOR DRIVE:** variable speed, with heavy-duty belt designed for long-life

**CONTROL STATION:** centralized design for easy operation

**GUARDING:** main frame, stainless steel

**LUBRICATION:** centralized, manual

**PROGRAMMABLE HEAT CONTROLLER:** individual unit temperature control, with digital display

**AUTOMATIC SAFETY CONTROL:** shuts heaters down when no air flow is detected and/or main drive stops

### CONTAINER HANDLING FEATURES

**CONTAINER ROTATION CONTROLS:** adjustable speeds for a consistent shrink

**CONTAINER LINEAR SPEED CONTROLS:** adjustable speeds insure smooth operation

**INDEPENDANT SPEED CONTROLS:** linear speeds and rotational speeds are individually adjustable

**AUTOMATIC LINE SPEED CONTROLS:** changes machine speed based on container supply at infeed and discharge

### AVAILABLE OPTIONS

**ADDITIONAL HOT AIR GUNS:** for applications requiring high % shrinkage

**UPPER SAFETY GUARDING:** combination clear of polycarbonate and expanded metal panels with safety interlocks (required for CE mark)

**CE CERTIFICATION:** to meet European standards

**ELECTRICAL REQUIREMENTS:** selected additional voltages can be offered

### SPARE PARTS KIT